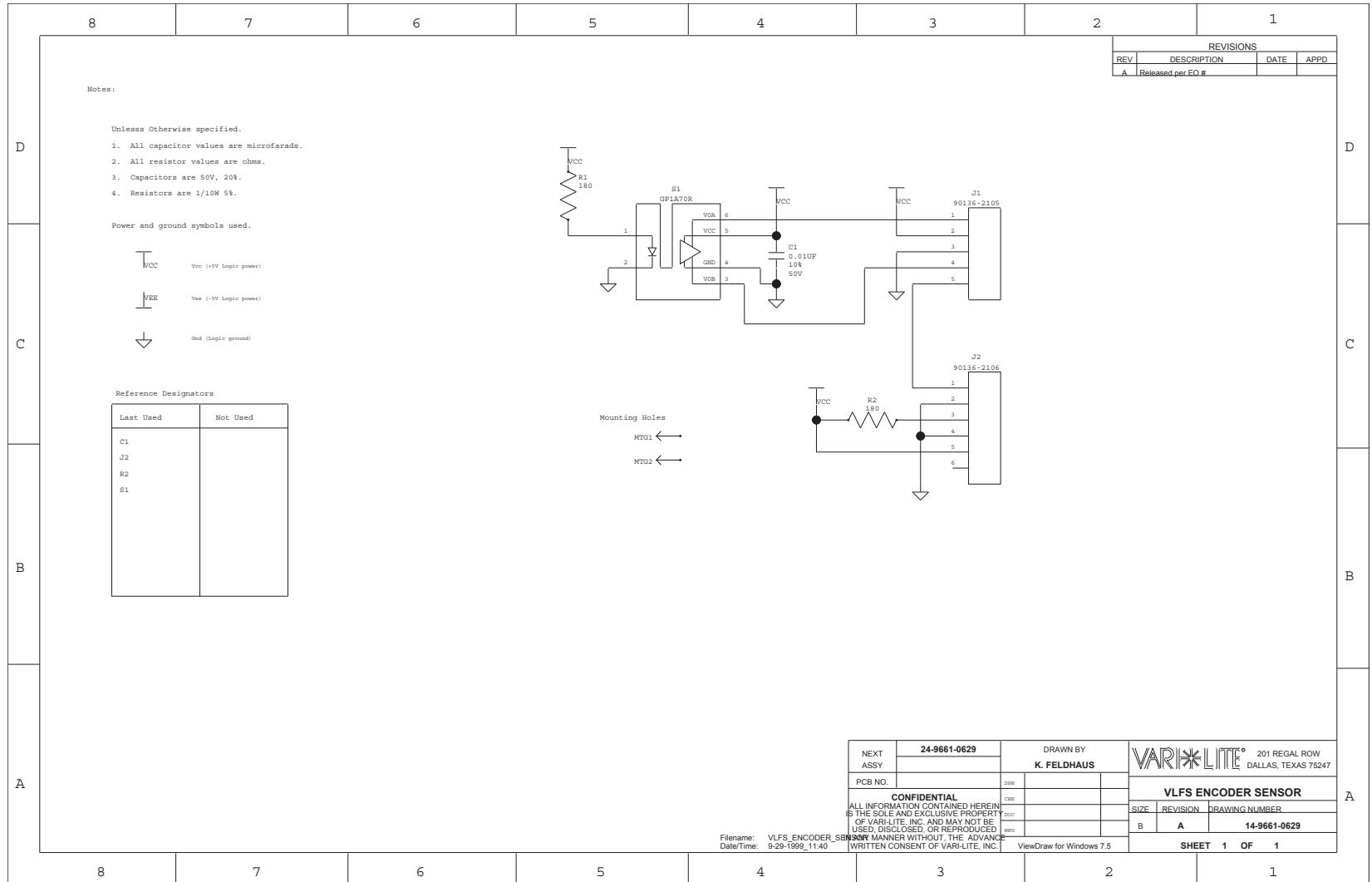
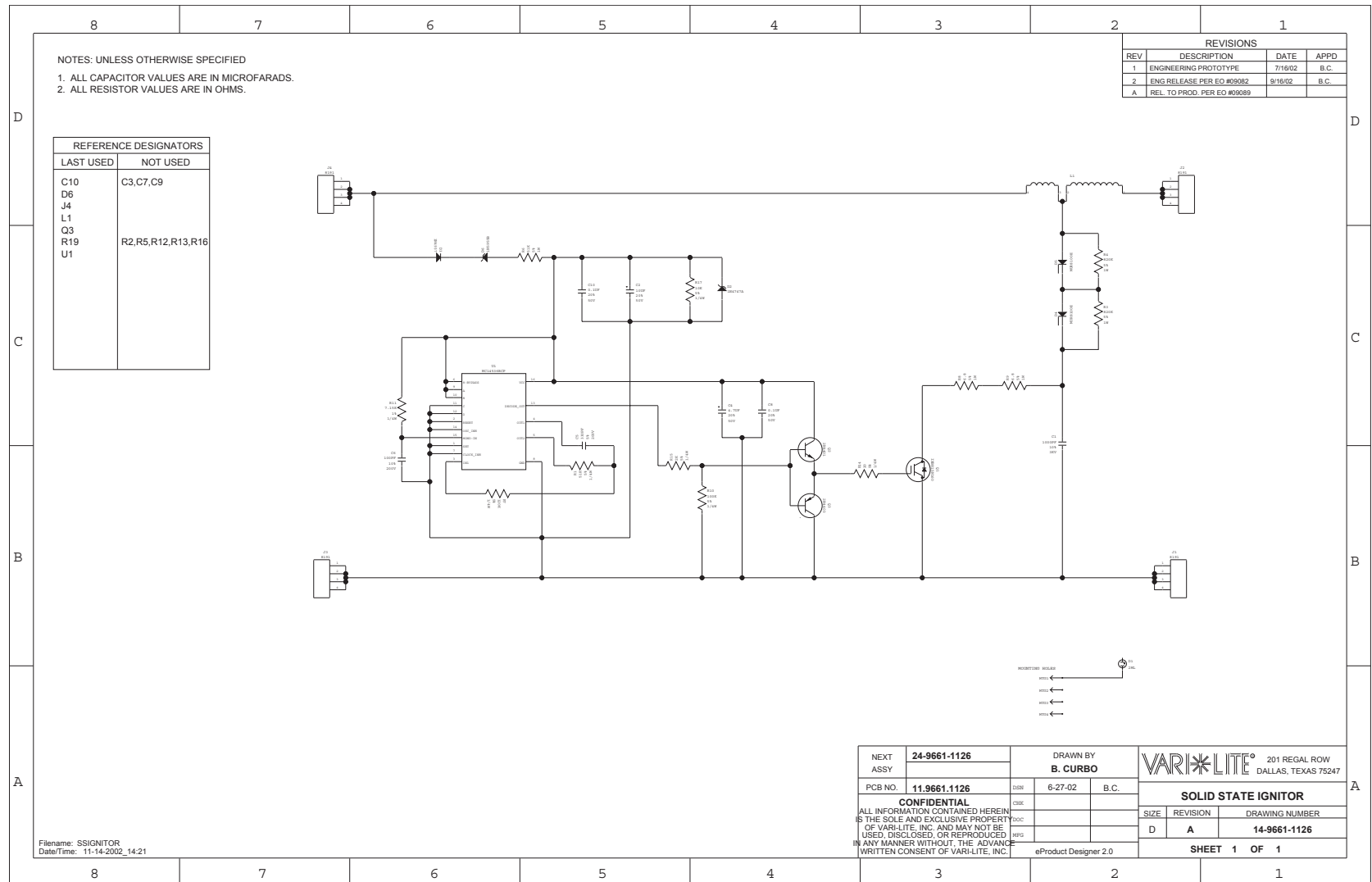


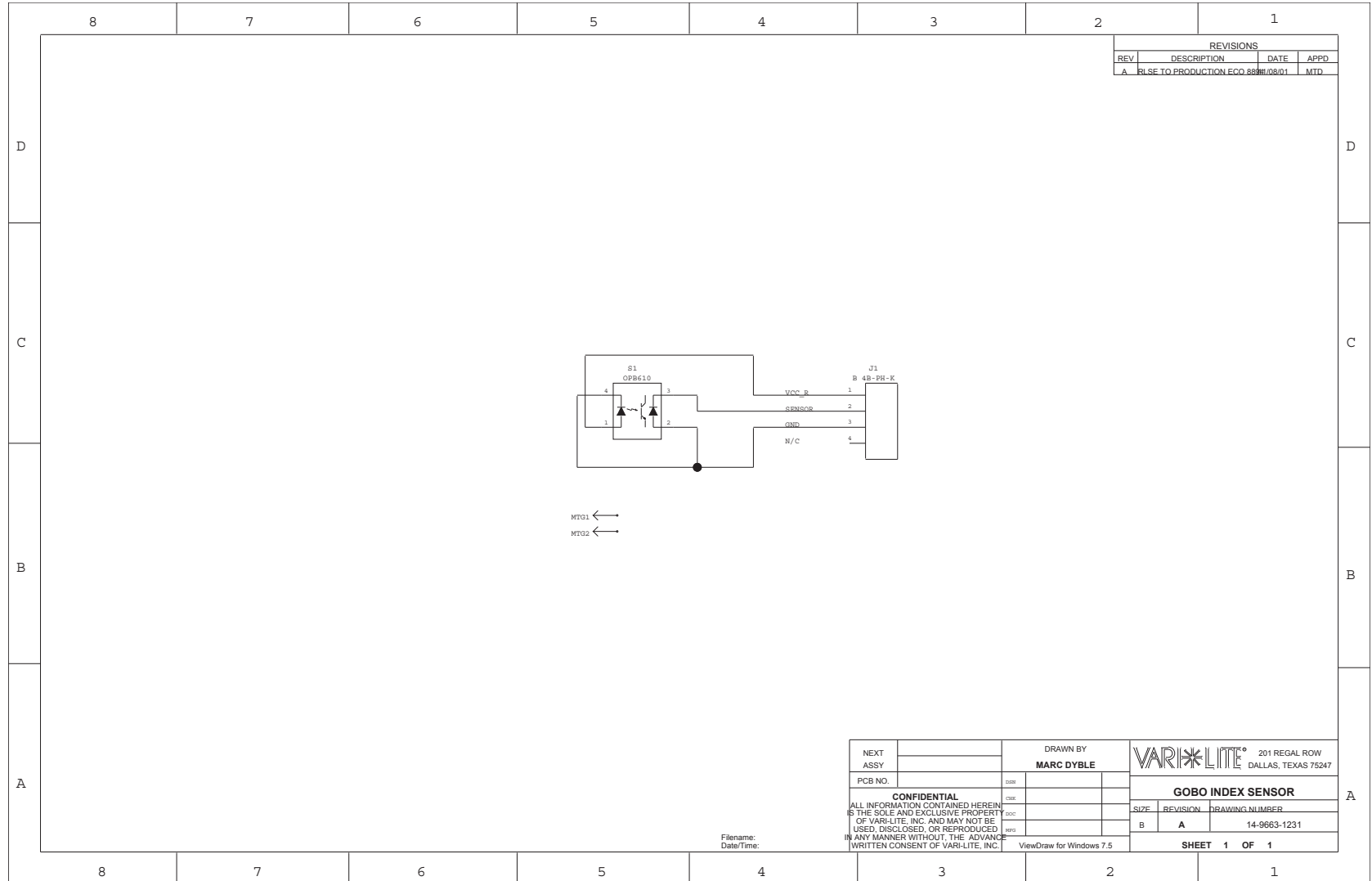
Encoder Sensor PCB (Sheet 1 of 1)



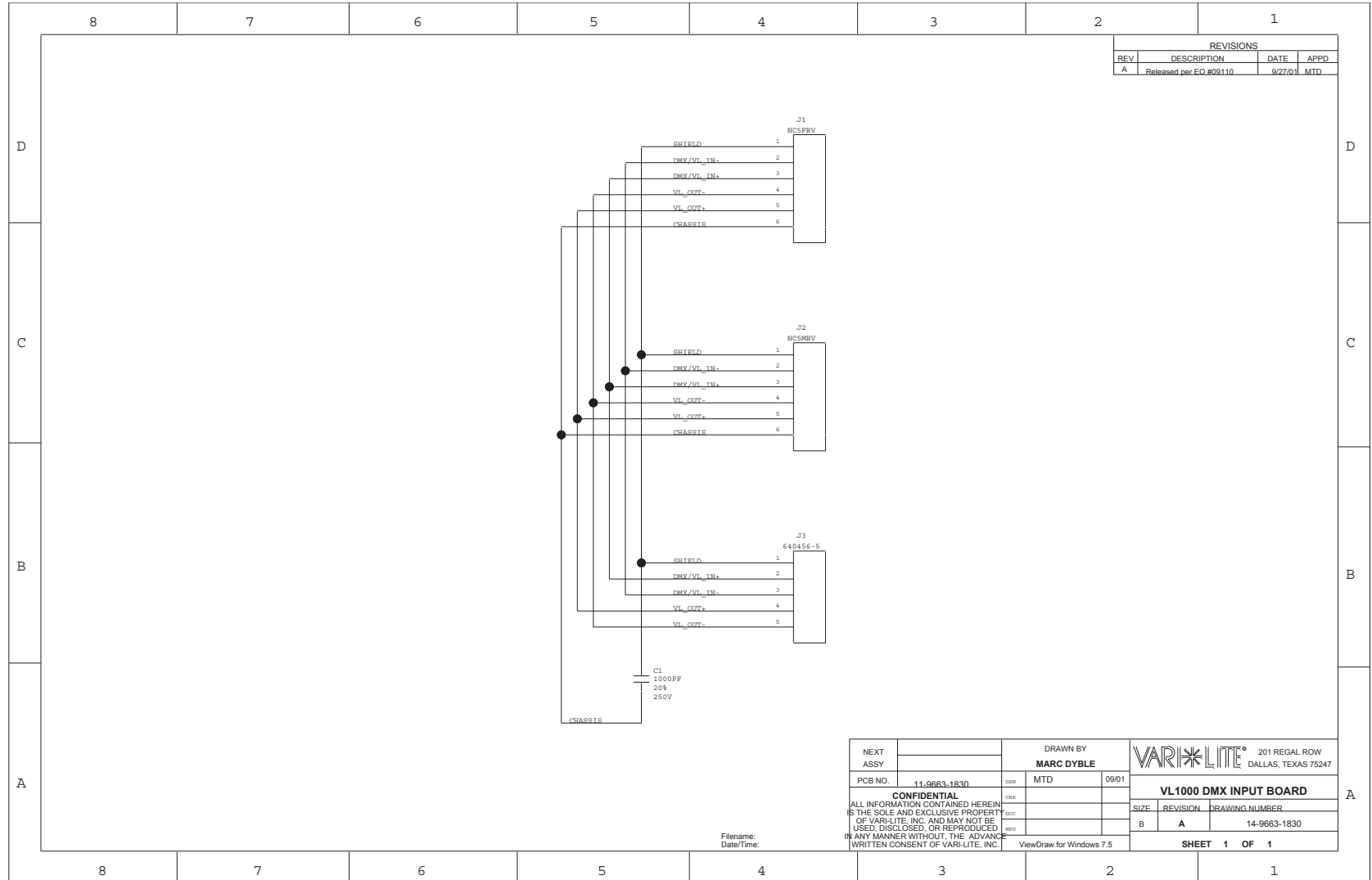
**Solid State Ignitor PCB (Sheet 1 of 1)**



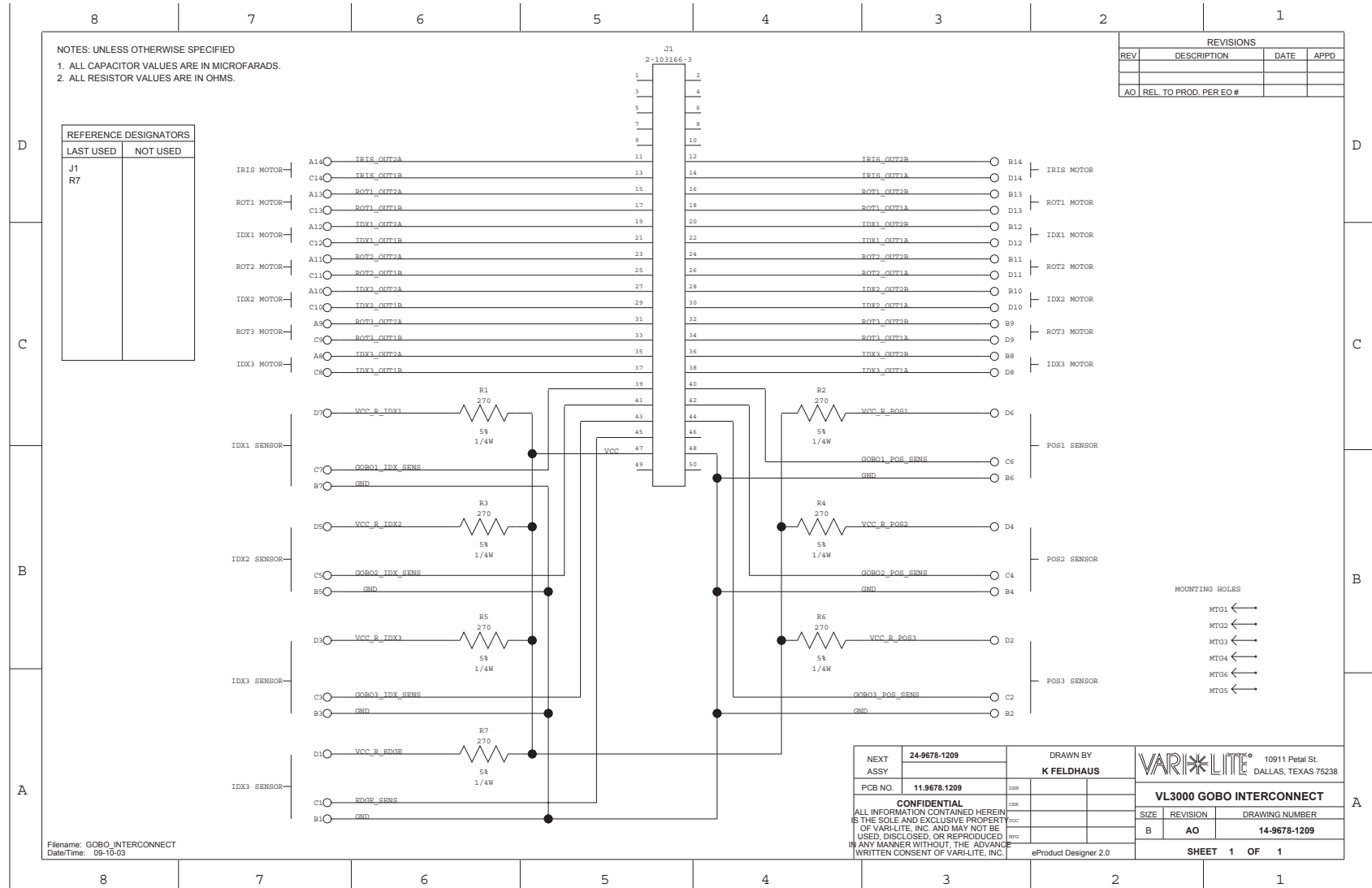
Gobo Index Sensor PCB (Sheet 1 of 1)



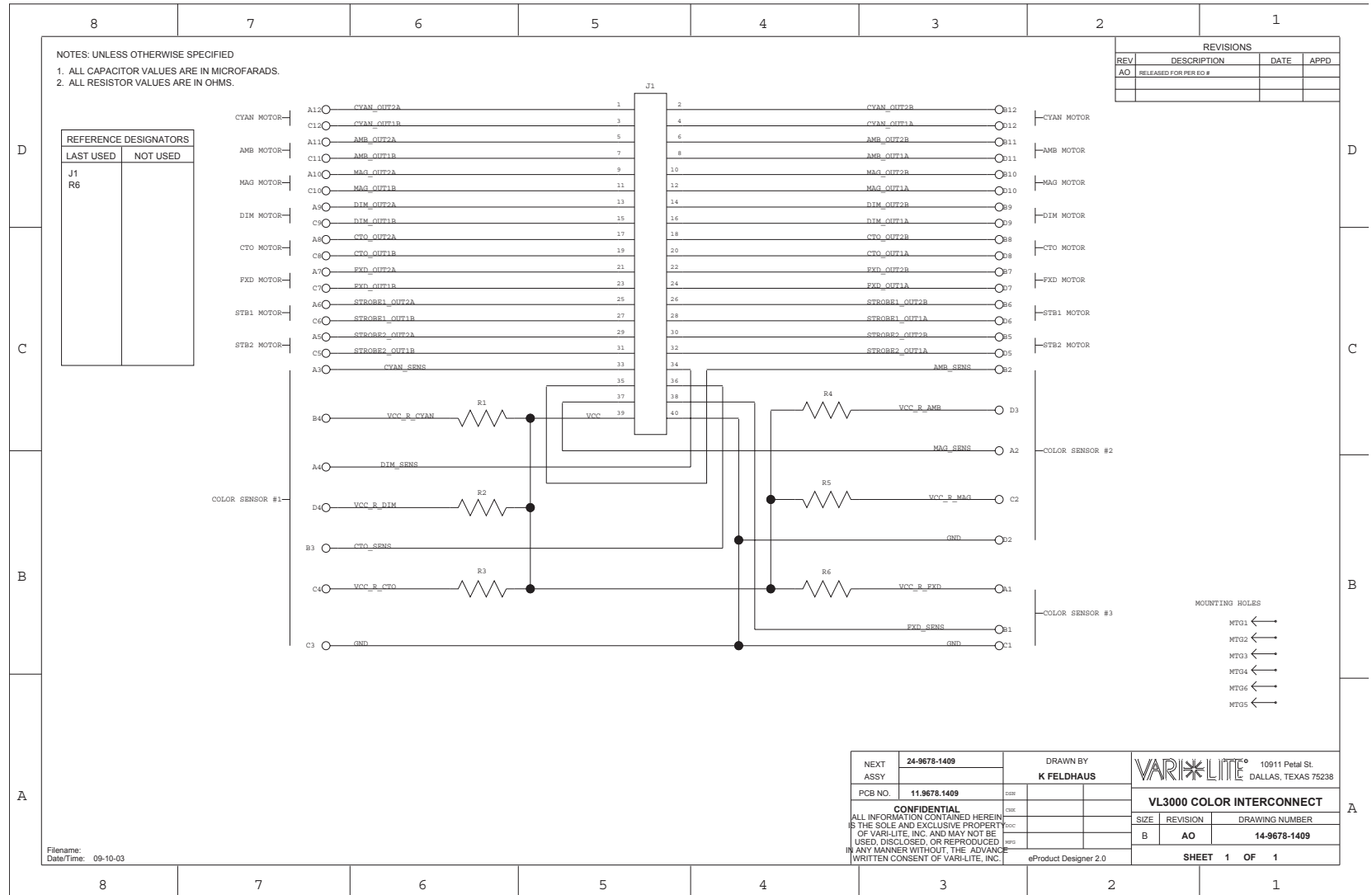
DMX Input PCB (Sheet 1 of 1)



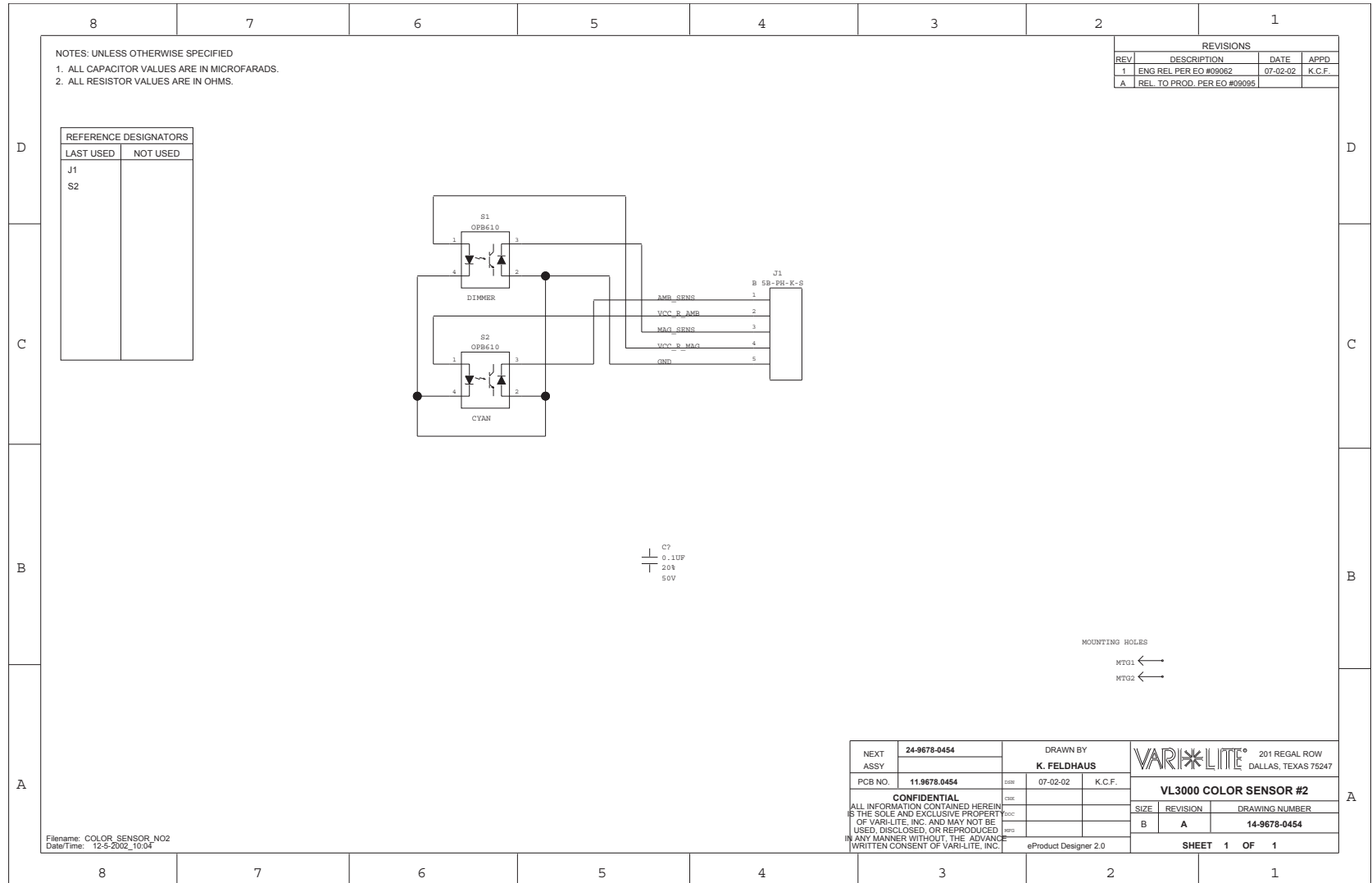
Gobo Interconnect PCB (Sheet 1 of 1)



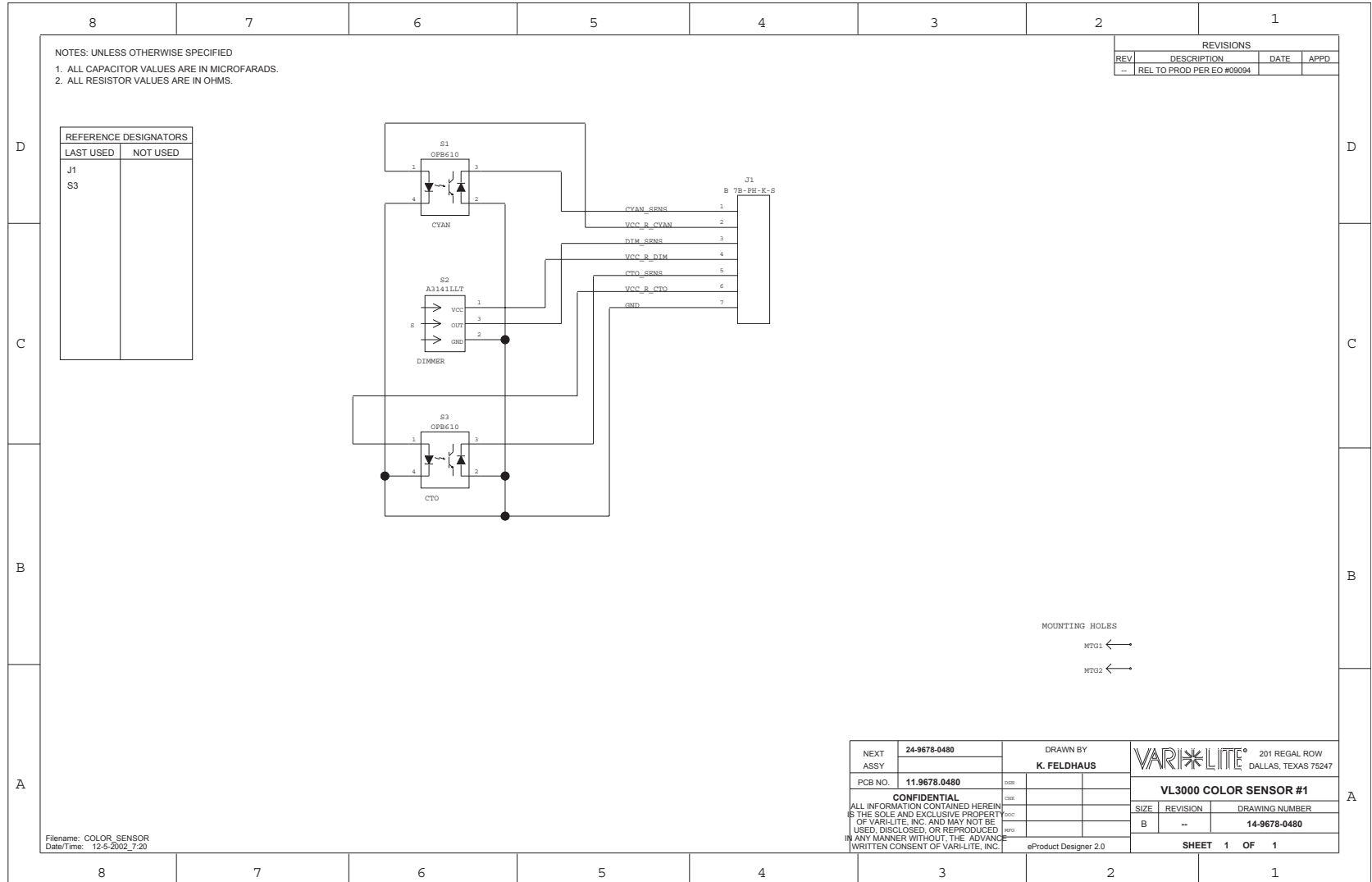
Color Interconnect PCB (Sheet 1 of 1)



Color Sensor #2 PCB (Sheet 1 of 1)

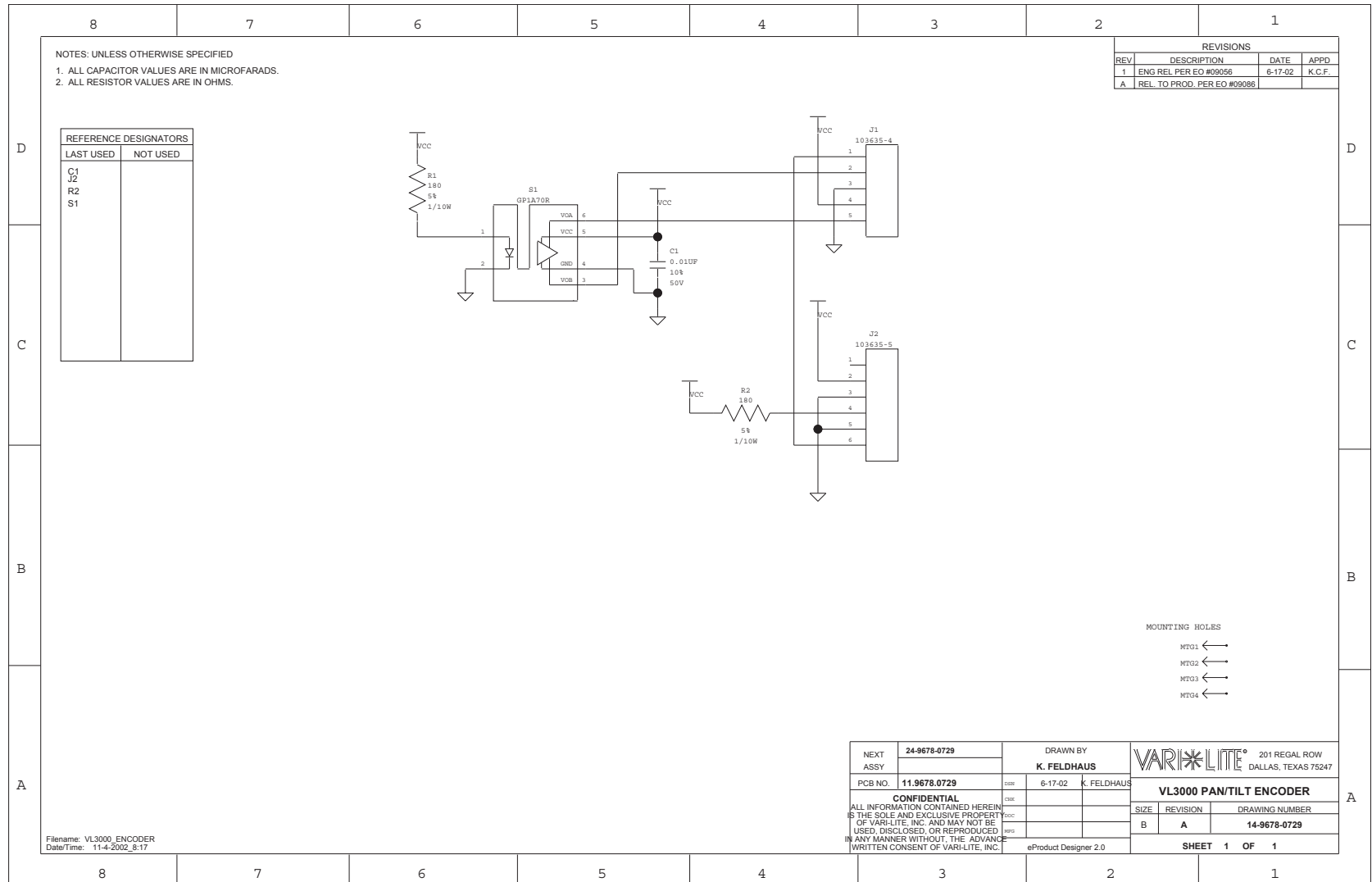


Color Sensor #1 PCB (Sheet 1 of 1)

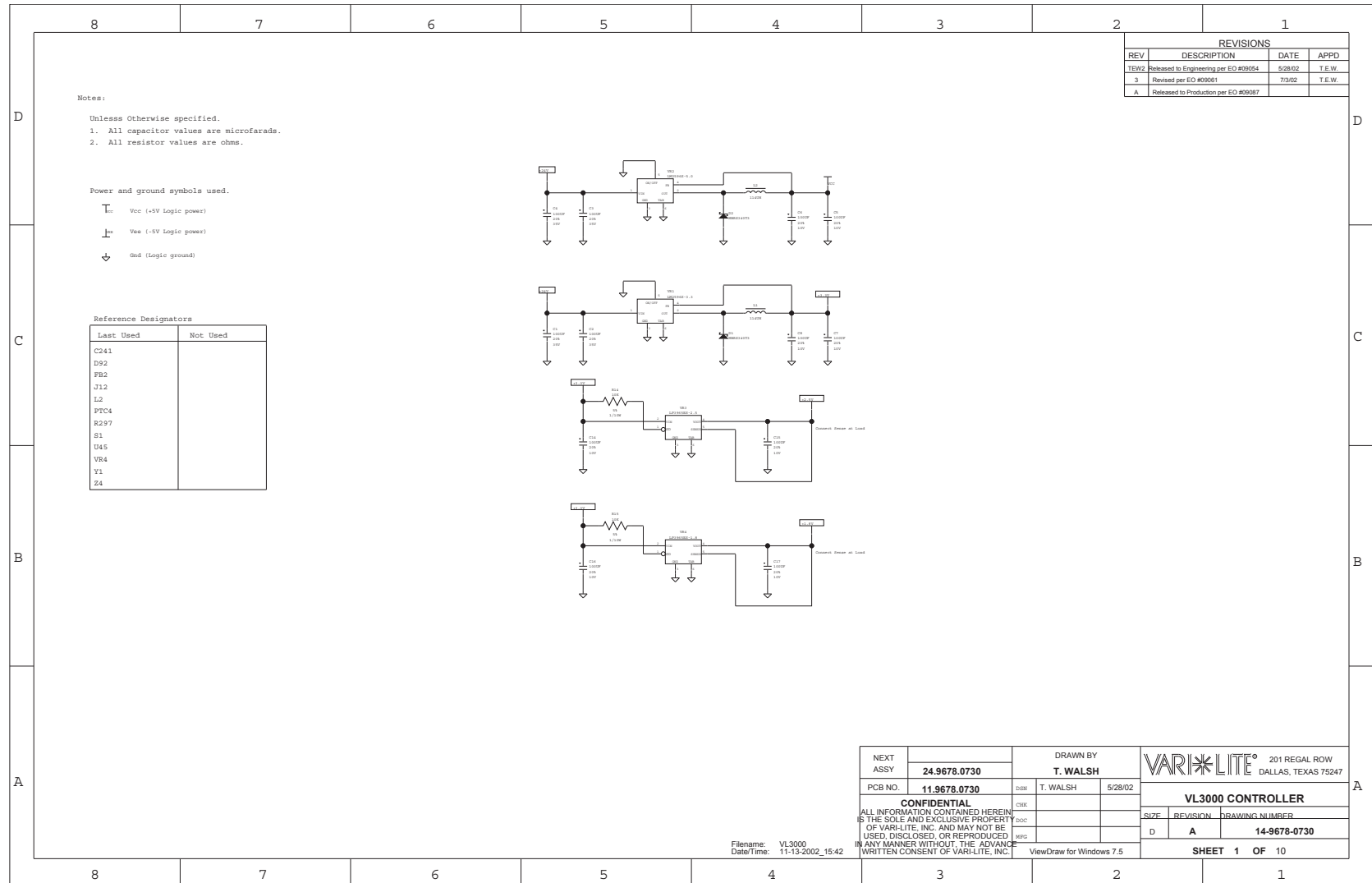




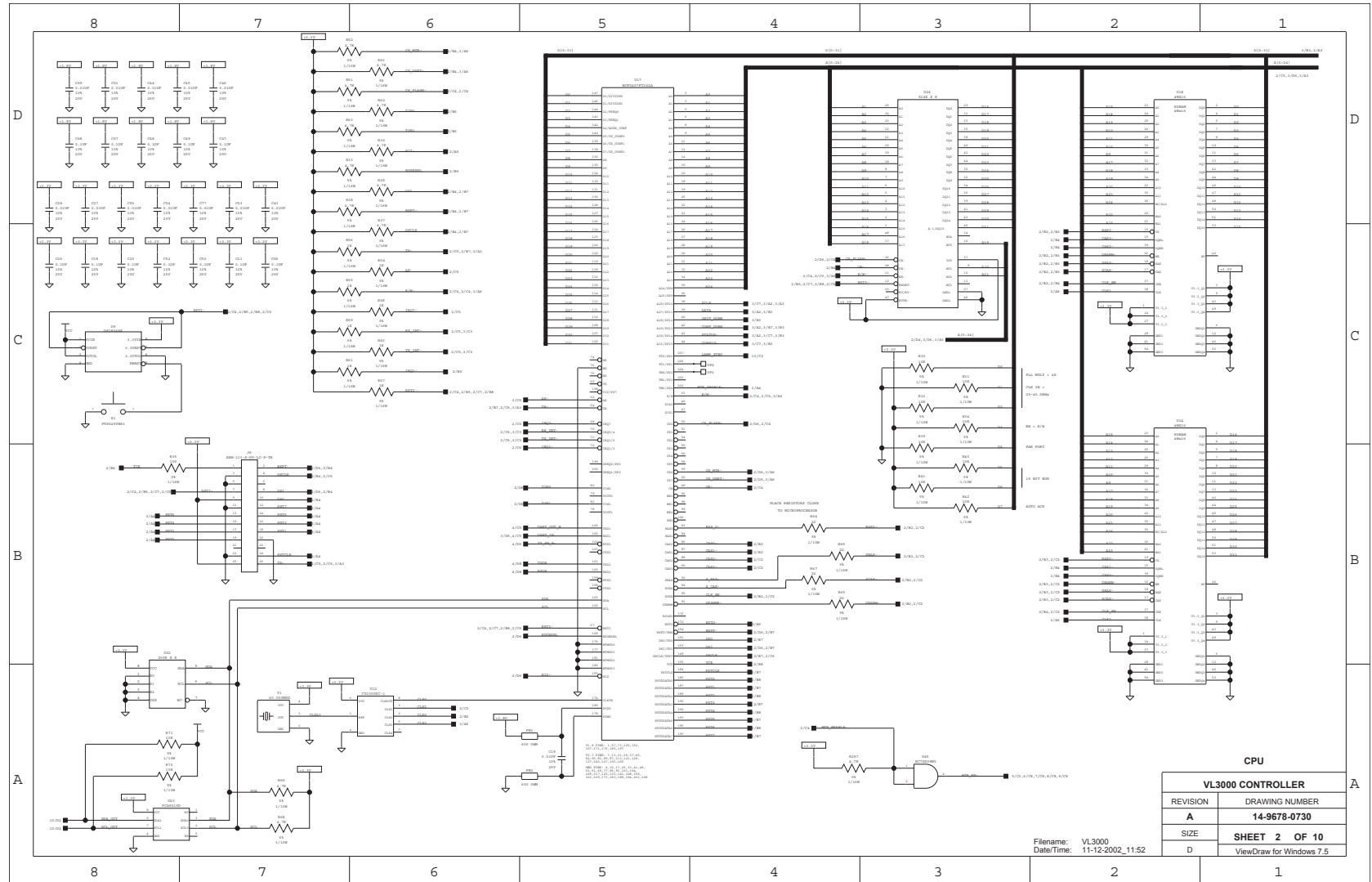
Pan/Tilt Encoder PCB (Sheet 1 of 1)



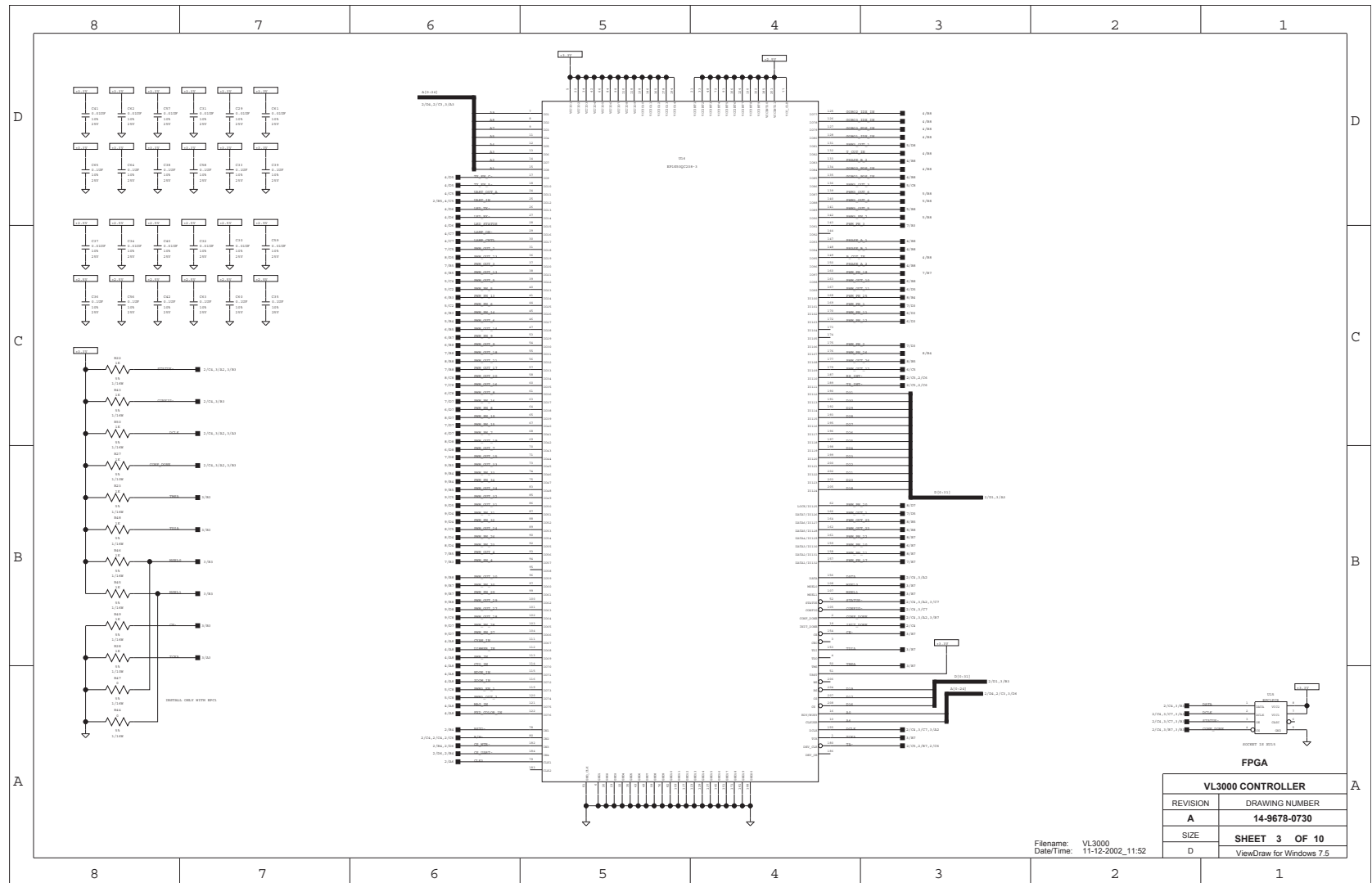
VL3000 Controller PCB (Sheet 1 of 10)



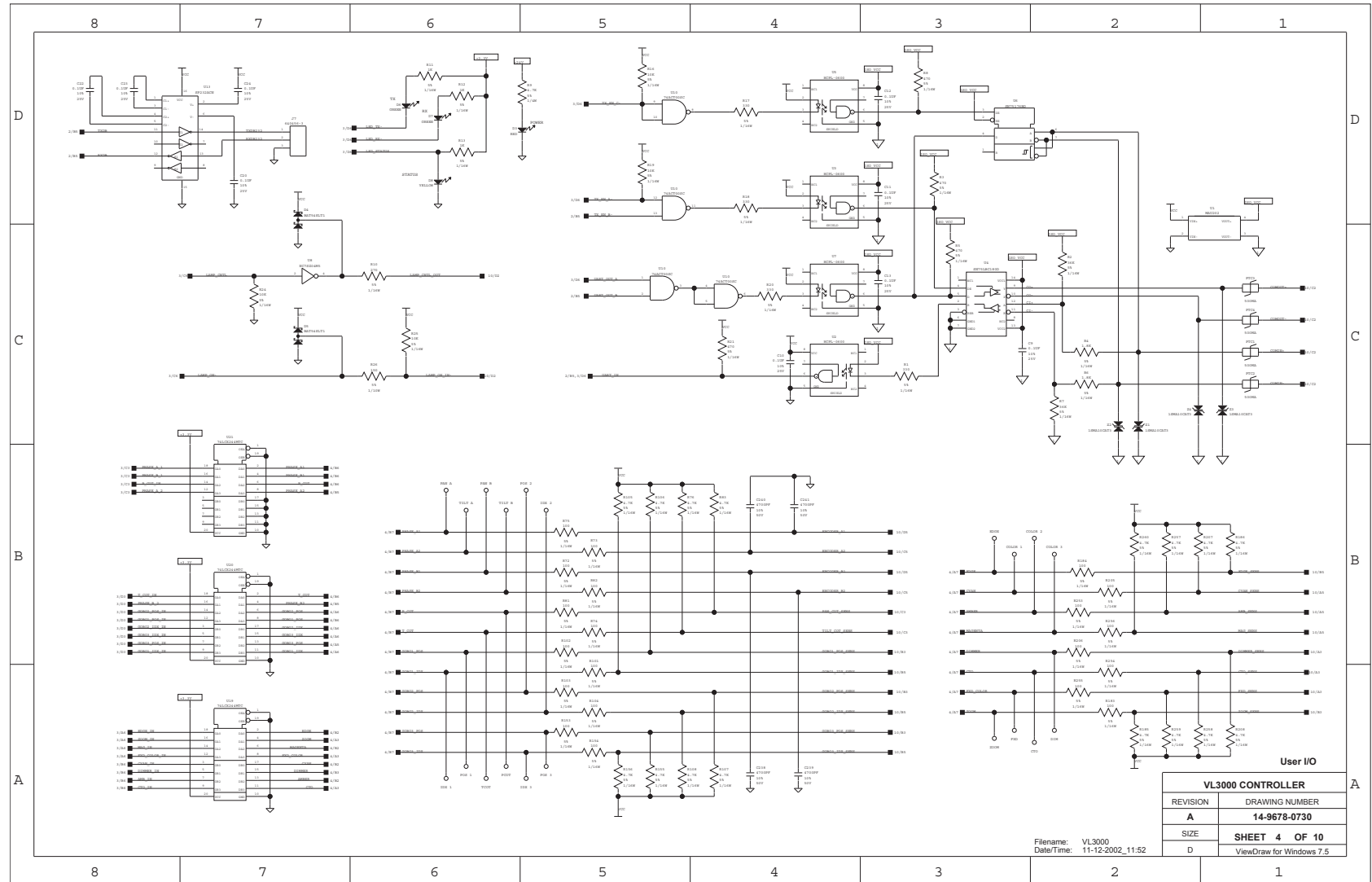
**VL3000 Controller PCB (Sheet 2 of 10)**



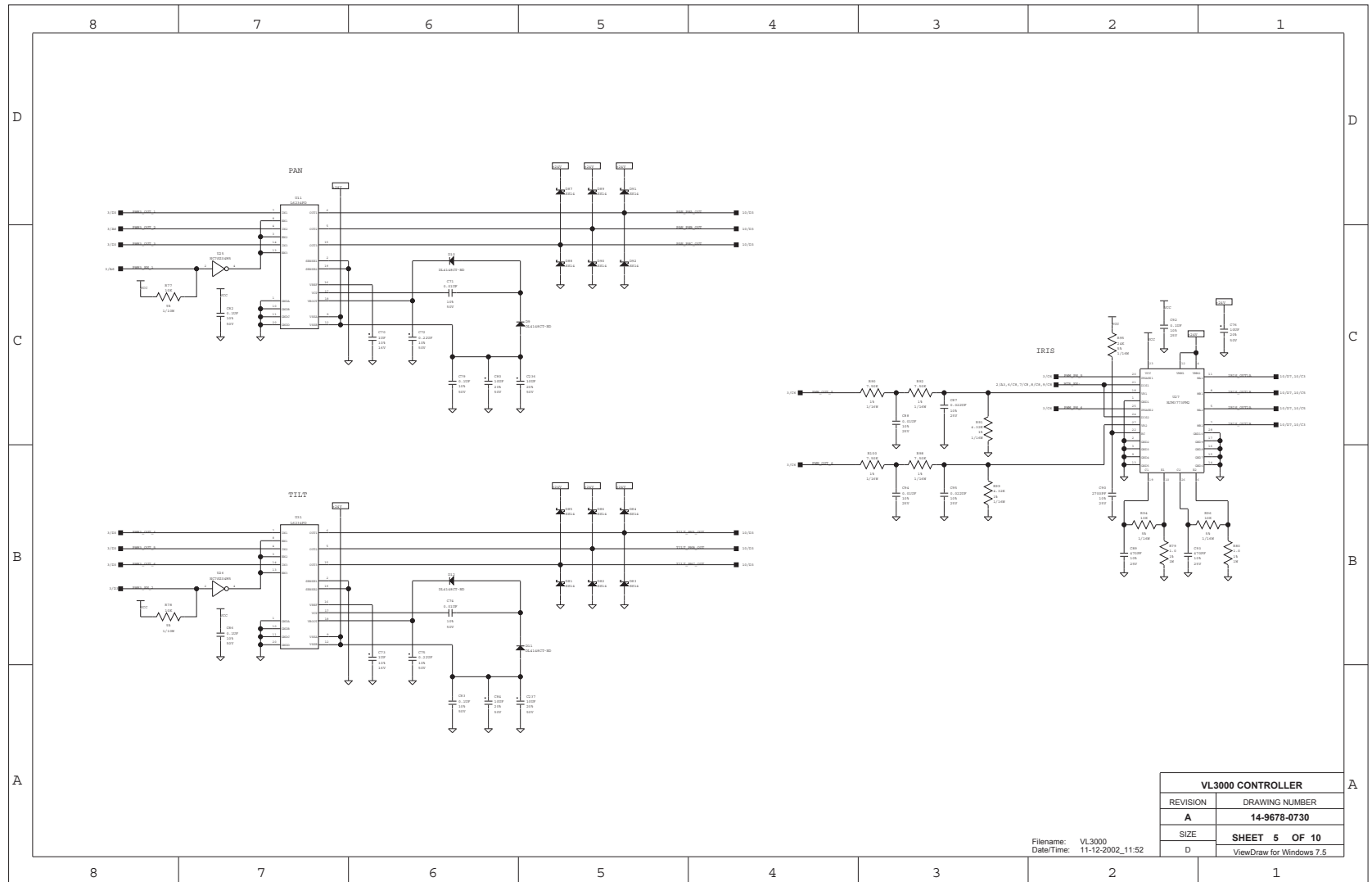
VL3000 Controller PCB (Sheet 3 of 10)



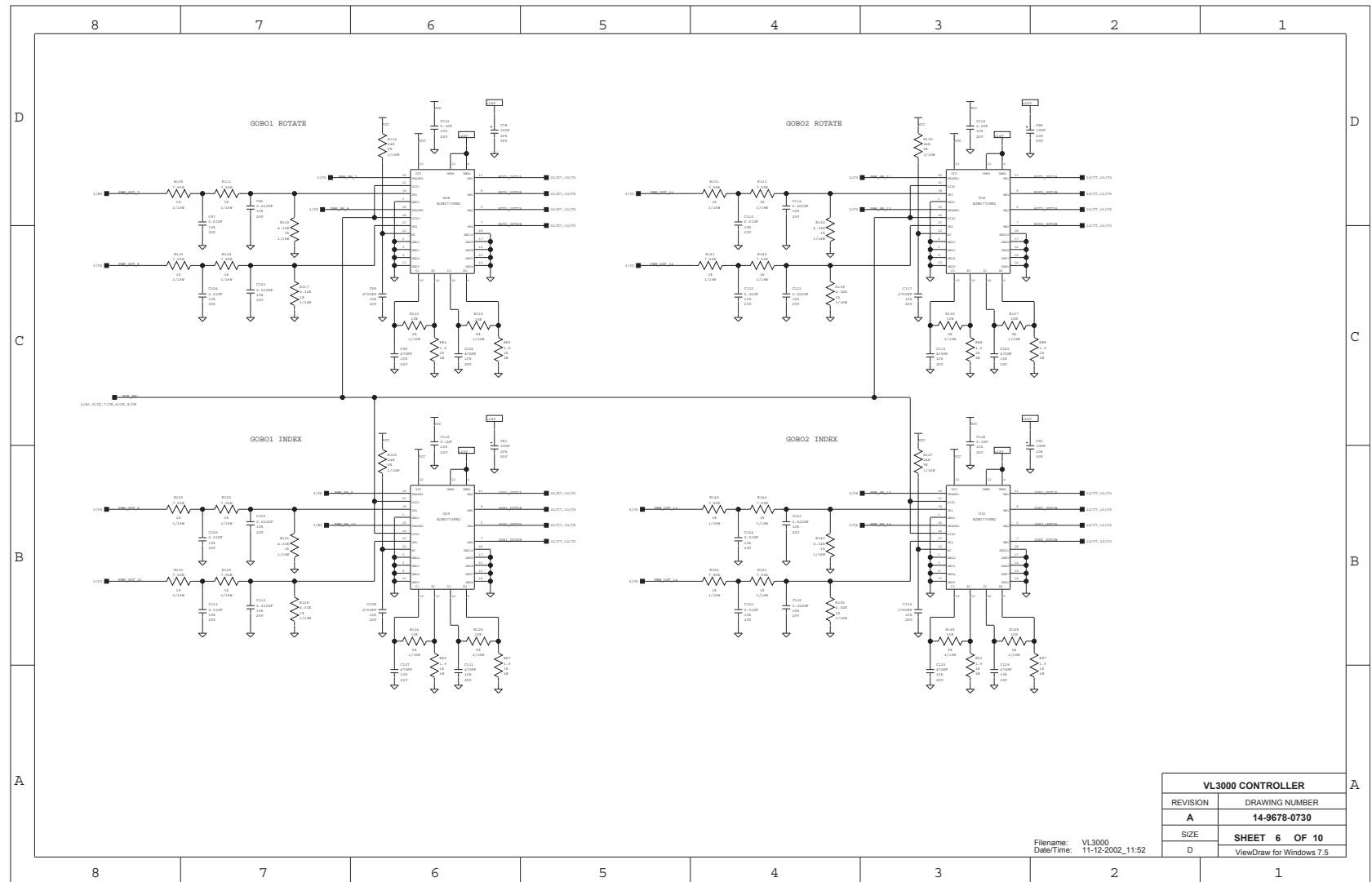
VL3000 Controller PCB (Sheet 4 of 10)



**VL3000 Controller PCB (Sheet 5 of 10)**



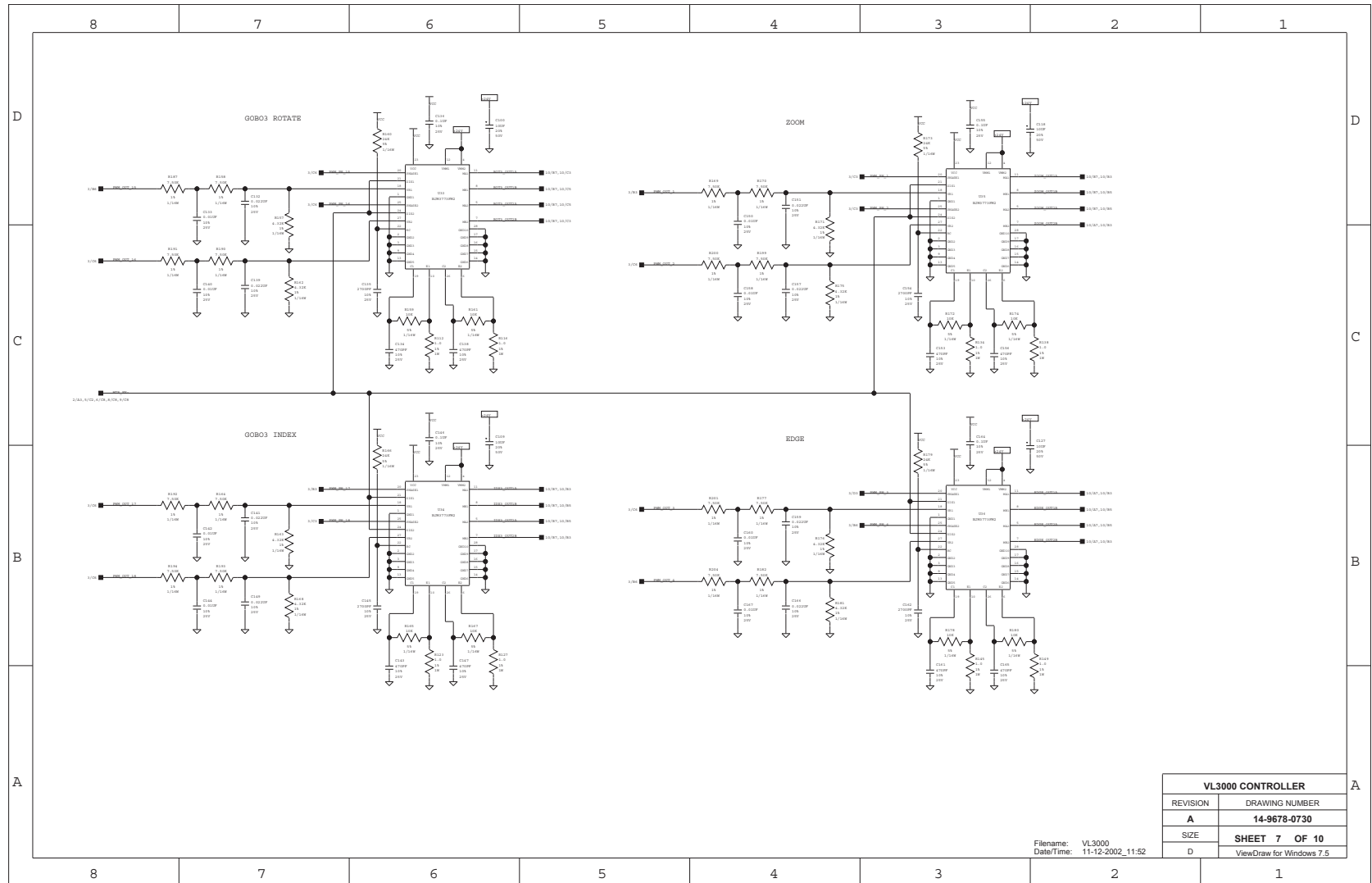
VL3000 Controller PCB (Sheet 6 of 10)



VL3000 CONTROLLER	
REVISION	DRAWING NUMBER
A	14-9678-0730
SIZE	SHEET 6 OF 10
D	ViewDraw for Windows 7.5

Filename: VL3000  
Date/Time: 11-12-2002\_11:52

**VL3000 Controller PCB (Sheet 7 of 10)**

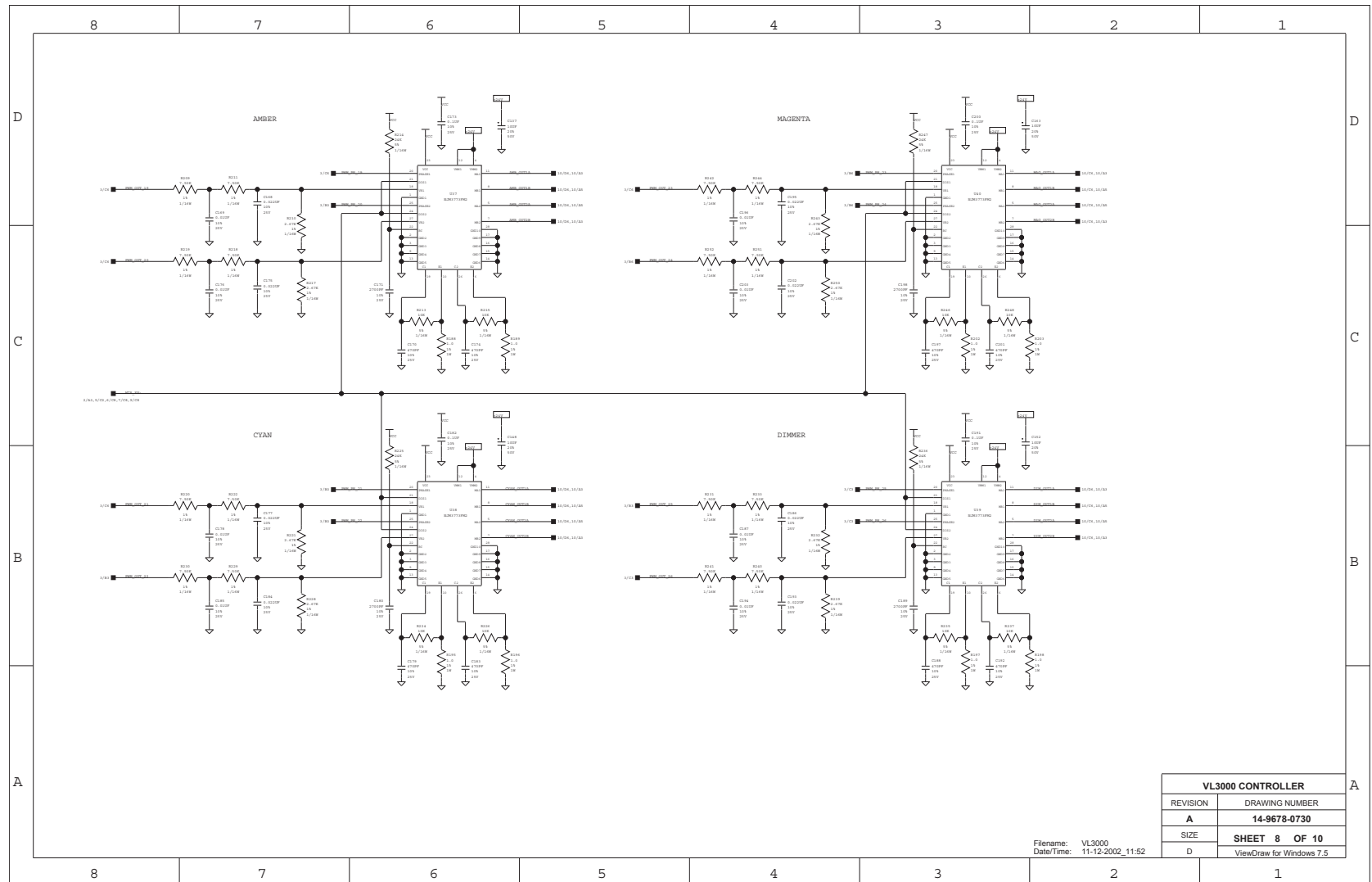


VL3000 CONTROLLER	
REVISION	DRAWING NUMBER
A	14-9678-0730
SIZE	SHEET 7 OF 10
D	ViewDraw for Windows 7.5

Filename: VL3000  
Date/Time: 11-12-2002\_11:52



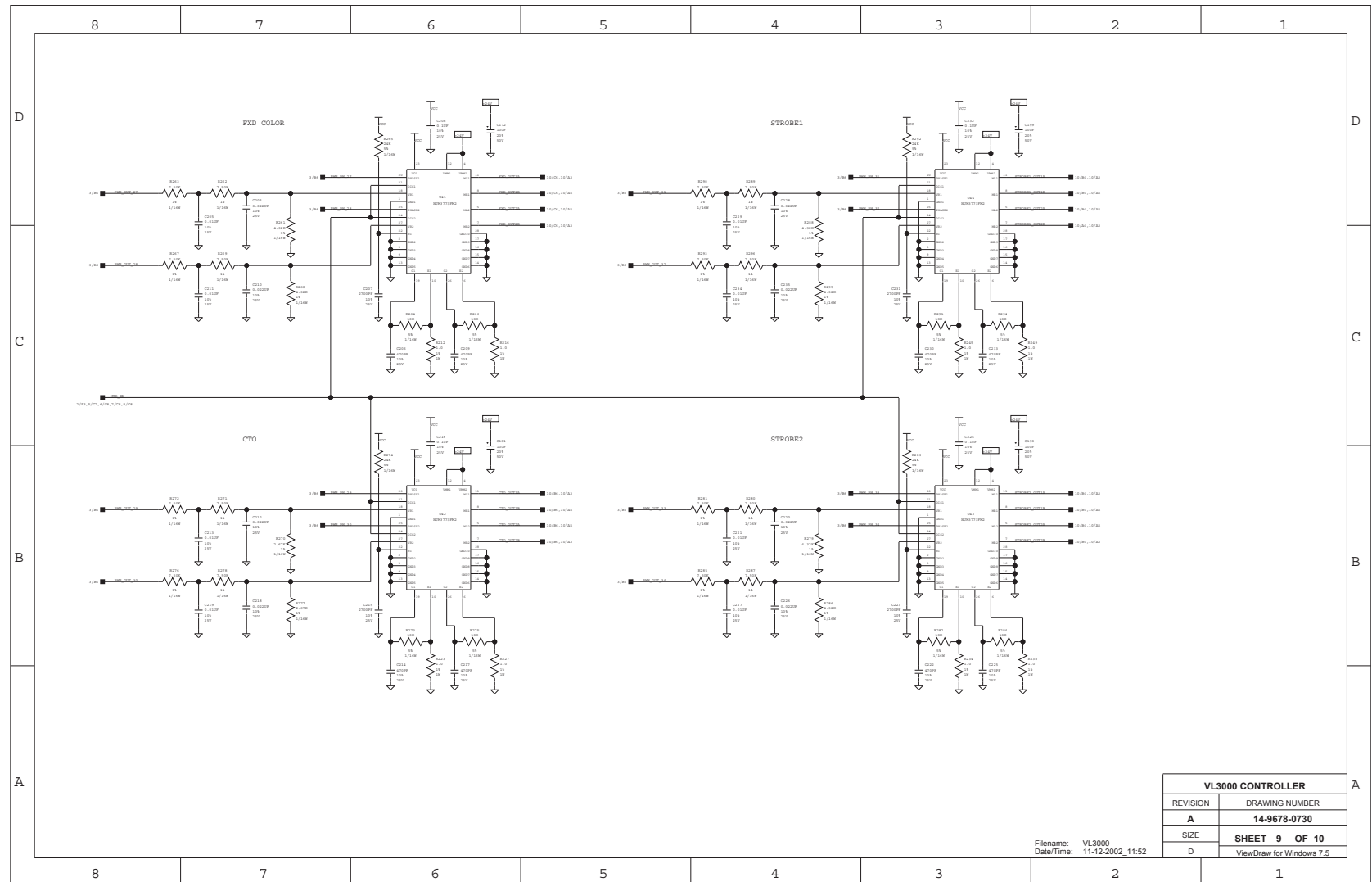
VL3000 Controller PCB (Sheet 8 of 10)



VL3000 CONTROLLER	
REVISION	DRAWING NUMBER
A	14-9678-0730
SIZE	SHEET 8 OF 10
D	ViewDraw for Windows 7.5

Filename: VL3000  
Date/Time: 11-12-2002\_11:52

VL3000 Controller PCB (Sheet 9 of 10)

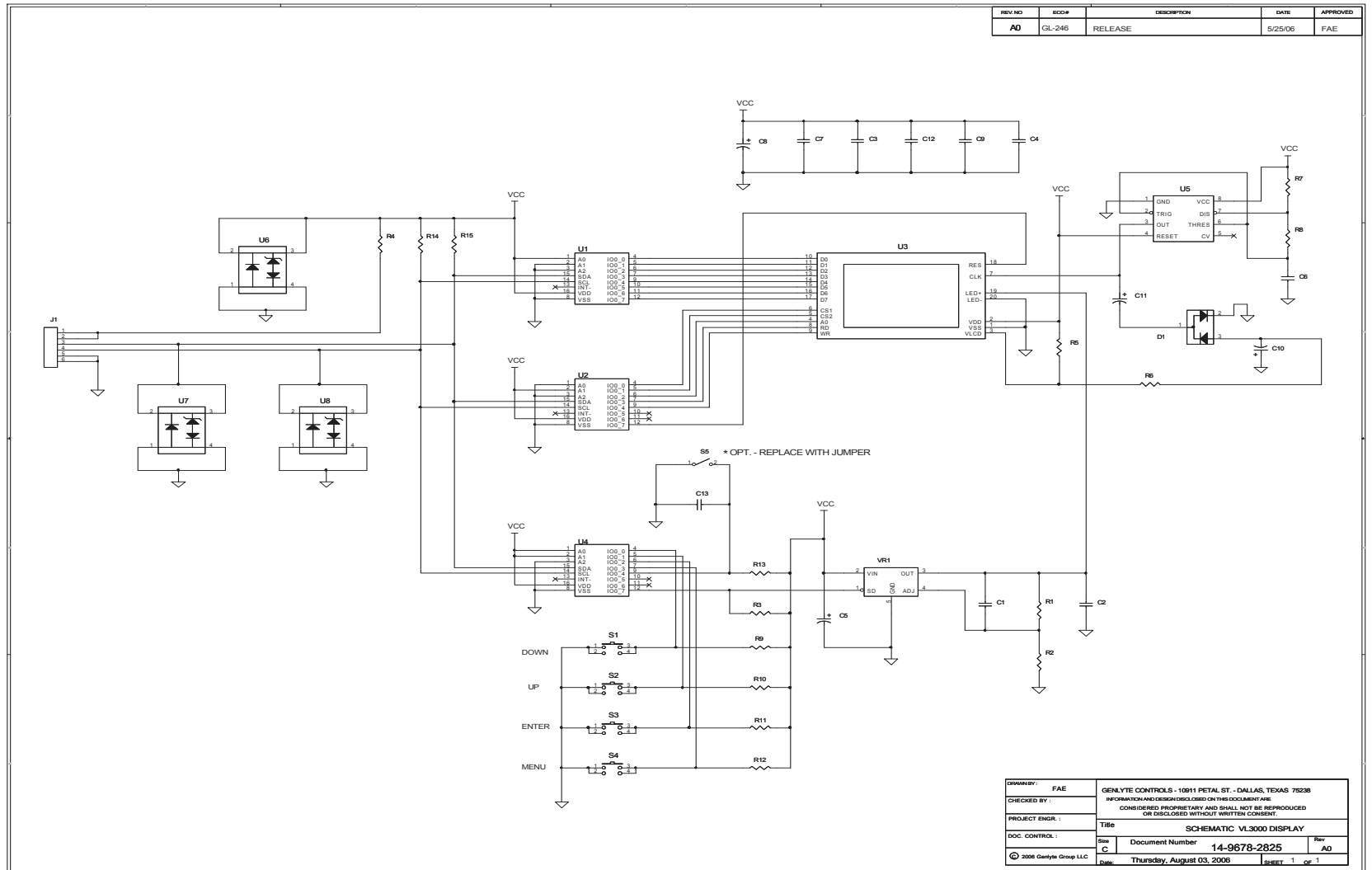


VL3000 CONTROLLER	
REVISION	DRAWING NUMBER
A	14-9678-0730
SIZE	SHEET 9 OF 10
D	ViewDraw for Windows 7.5

Filename: VL3000  
Date/Time: 11-12-2002\_11:52



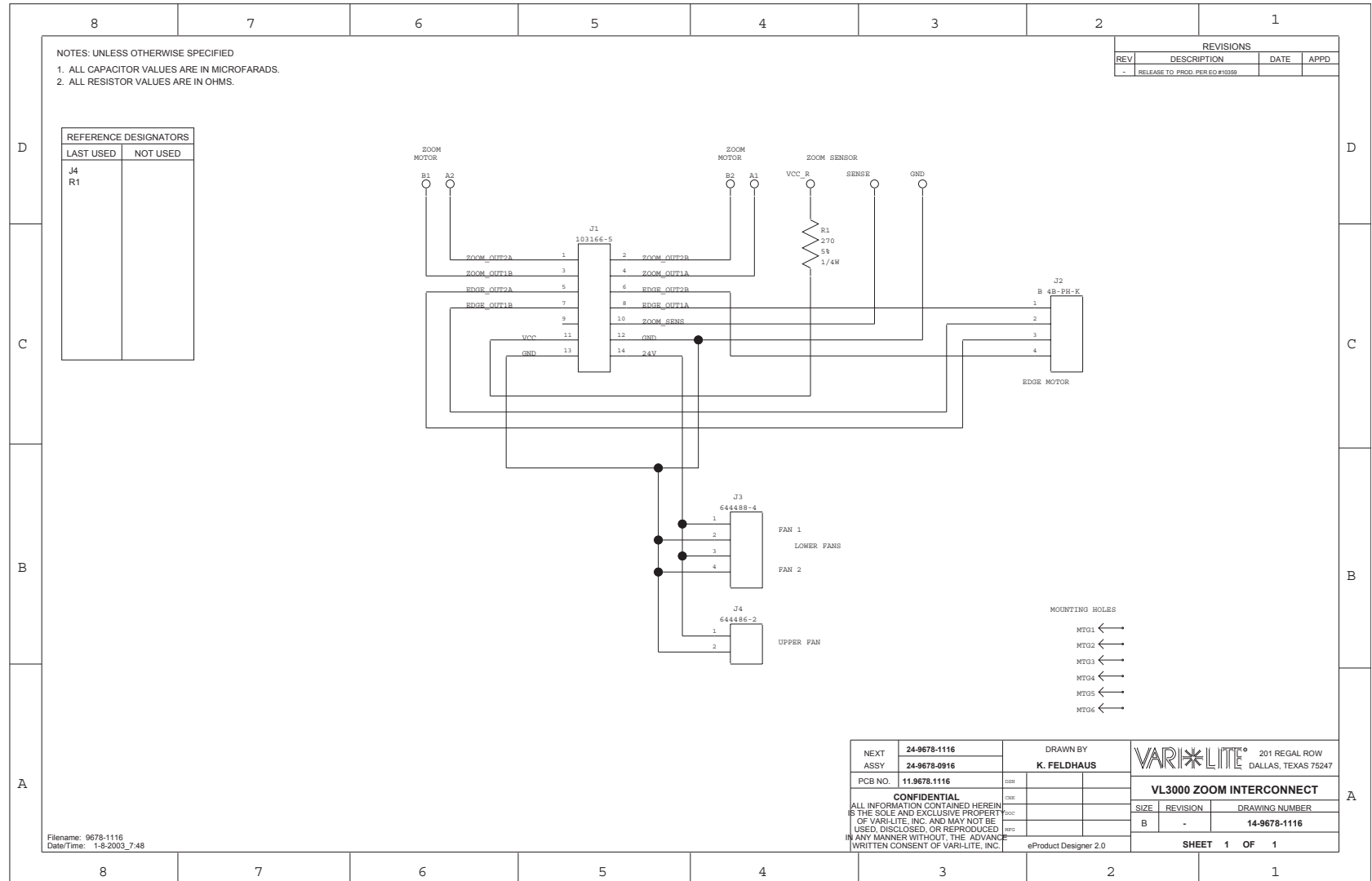
Display PCB (Sheet 1 of 1)



REV. NO.	ECO#	DESCRIPTION	DATE	APPROVED
A0	GL-246	RELEASE	5/25/06	FAE

DRAWN BY:	FAE	GENLYTE CONTROLS - 10911 PETAL ST. - DALLAS, TEXAS 75238
CHECKED BY:		INFORMATION AND DESIGN DISCLOSED ON THIS DOCUMENT ARE CONFIDENTIAL, PROPRIETARY AND SHALL NOT BE REPRODUCED OR DISCLOSED WITHOUT WRITTEN CONSENT.
PROJECT ENGR.:		
DOC. CONTROL:		
Rev	C	Title
Doc Number	14-9678-2825	SCHMATIC VL3000 DISPLAY
Rev	A0	
Date	Thursday, August 03, 2006	Sheet 1 of 1

Zoom Interconnect PCB (Sheet 1 of 1)



Filename: 9678-1116  
 Date/Time: 1-8-2003\_7:48

NEXT ASSY	24-9678-1116 24-9678-0916	DRAWN BY	K. FELDHAUS	201 REGAL ROW DALLAS, TEXAS 75247
PCB NO.	11.9678.1116	DESIGN		
CONFIDENTIAL ALL INFORMATION CONTAINED HEREIN IS THE SOLE AND EXCLUSIVE PROPERTY OF VARI*LITE, INC. AND MAY NOT BE USED, DISCLOSED, OR REPRODUCED IN ANY MANNER WITHOUT THE ADVANCED WRITTEN CONSENT OF VARI*LITE, INC.				VL3000 ZOOM INTERCONNECT SIZE: B REVISION: - DRAWING NUMBER: 14-9678-1116
Product Designer 2.0				SHEET 1 OF 1

**Zoom Sensor PCB (Sheet 1 of 1)**

